

## MONOGO<sup>plus</sup>

### STATIONARY FILTER UNIT WITH METAL TUBE ARM

The MonoGo<sup>plus</sup> is a stationary welding fume filter with built-in fan and a metal tube arm (KUA). It contains a disposable filter package.

The MonoGo<sup>plus</sup> is a basic extractor. It has been designed for the consumption of approx. 2 coils of solid wire or 15 kg/33 lbs of electrodes per month.



### APPLICATIONS

The MonoGo<sup>plus</sup> is intended to be used for the following applications:

- MIG-MAG/GMAW welding
- TIG welding
- FCAW welding
- stick/MMAW welding
- grinding
- polishing
- finishing



### SPECIFICATIONS

#### Physical dimensions and properties

Material (housing):	electro-zinc coated steel (according to DIN EN 10152)
• steel grade	• DC01+ZE
• steel grade no.	• 1.0330
Colour	yellow RAL 1004 grey RAL 7011
Weight (net), excl. arm	79,5 kg (175 lbs)
Mains cord	not included

#### Extraction arm

Type	KUA
Material	metal tube
Diameter	Ø 160 mm (6.3 in.)
Hood opening	Ø 300 mm (11.8 in.)
Length:	
• KUA-2	• 2 m (6.6 ft)
• KUA-3	• 3 m (9.8 ft)
• KUA-4	• 4 m (13.1 ft)
Weight:	
• KUA-2	• 12 kg (26.5 lbs)
• KUA-3	• 15,5 kg (34.2 lbs)
• KUA-4	• 18 kg (39.7 lbs)

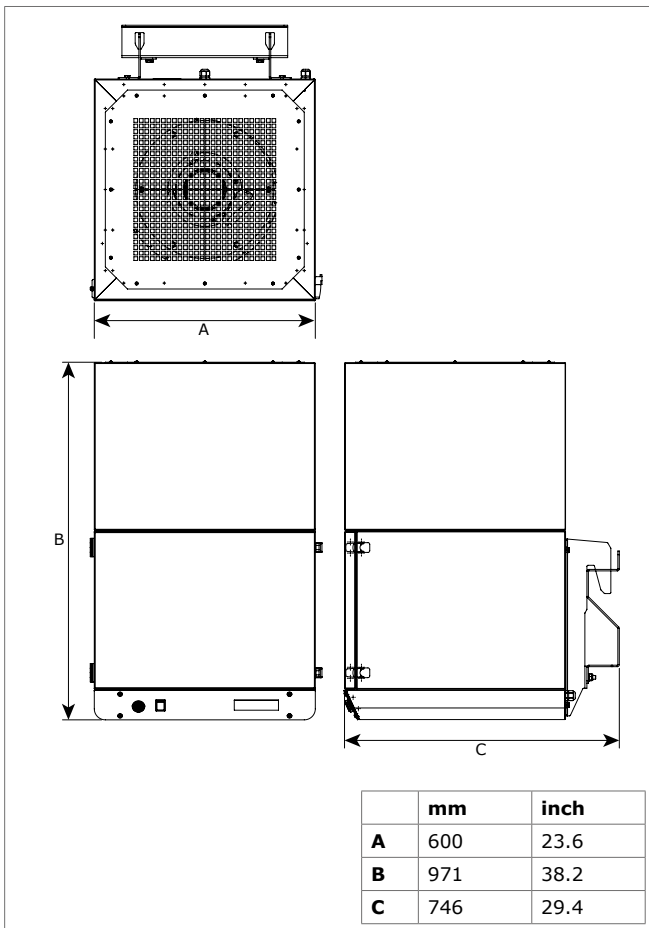
#### Filters

Pre filter (cassette):	
• material	• polyester
• filter surface	• 1 m <sup>2</sup> (10.8 ft <sup>2</sup> )
• filter classification	• ISO Coarse 70% according to ISO 16890
• washable	• no
Main filter (cassette):	
• material	• glass fibre
• filter surface	• 26 m <sup>2</sup> (280 ft <sup>2</sup> )

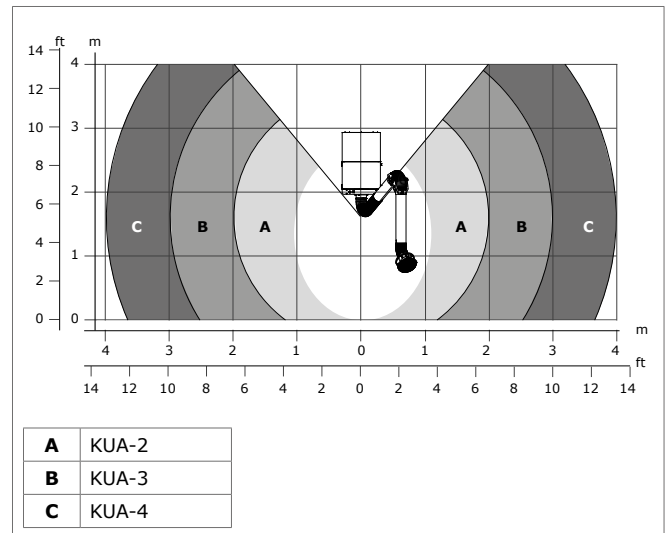
• efficiency class	• HEPA E12 according to EN 1822:2009
• washable	• no
<b>Performance</b>	
Fan type	radial
Extraction capacity (incl. extraction arm)	max. 1100 m <sup>3</sup> /h (600 CFM)
Fan speed	3400 rpm
Noise level (according to ISO 3746)	
<b>Electrical data</b>	
Power consumption	1,1 kW (1.5 HP)
Available connection voltage	• 115V/1ph/60Hz (116)
Motor design	IEC
Energy efficiency	<i>n.a. for single phase motors</i>
<b>Ambient and process conditions</b>	
Process temperature:	
• min.	• 5°C (41°F)
• nom.	• 20°C (68°F)
• max.	• 70°C (158°F)
Max. relative humidity	90%
Suitable for outdoor use	no
Storage conditions	• 5-45°C (41-113°F) • relative humidity max. 80%
<b>Scope of supply</b>	
Stationary filter unit, incl. fan and wall bracket – Extraction arm (pre-assembled) – Rotating flange – Arm swivel ring, incl. rubber collar – Extraction hood – Hood collar with safety mesh – Mounting material – Switch box	

Type	MonoGo <sup>plus</sup> /2m	MonoGo <sup>plus</sup> /3m	MonoGo <sup>plus</sup> /4m
<b>■ Order information</b>			
Connection voltage	Article no.	Article no.	Article no.
115V/1ph/60Hz	0000111457	0000111478	0000111490
Number/package	1	1	1
<b>■ Logistics data</b>			
Gross weight (incl. pallet)	107 kg (236 lbs)	110 kg (243 lbs)	111 kg (245 lbs)
Packing dimensions (incl. pallet)	800 x 1200 x 1750 mm (31.5x47.2x68.9 in.)	800 x 1200 x 2250 mm (31.5x47.2x88.6 in.)	800 x 1200 x 2250 mm (31.5x47.2x88.6 in.)
Max. number/pallet	2	2	2
Harmonized Tariff Code	84213925	84213925	84213925

**DIMENSIONS**



**WORKING RANGE**



**FEATURES & BENEFITS**




Compact design



Motor protection switch

Service indicator

**APPROVALS/CERTIFICATES**

	<p>On electrical components only</p>
---	--------------------------------------

**Application restrictions**

Do **not** use the product for the following applications or in the following circumstances: polishing applications in combination with grinding, welding or any other application that generate sparks (fibres from polishing or abrasive flap disks are highly flammable and pose a high risk of filter fires when exposed to sparks) | aluminium laser cutting | oil mist | heavy oil mist in welding fume | arc-air gouging | extraction of aggressive fumes and gases (e.g. from acids, from alkaline, from soldering paste containing lithium) | extraction of hot gases (more than 70°C/158°F continuously) | grinding aluminum and magnesium | flame spraying | extraction of cement, saw dust, wood dust etc. | sucking cigarettes, cigars, oiled tissues and other burning particles, objects and acids | explosive environments or explosive substances/gases

Product type

**MonoGo<sup>plus</sup>**

Article no.

*refer to Order information*

Product category

stationary filter units

Version

010218/0

Always check the latest version on [www.plymovent.com](http://www.plymovent.com)